

OPERA
GALLERY

X

ART021
SHANGHAI
CONTEMPORARY
ART FAIR

Nov
9-12
2023

art021

OPERA GALLERY



Featuring

- Fernando BOTERO
- André BRASILIER
- Marc CHAGALL
- CHU Teh-Chun
- FENG Xiao-Min
- KUSAMA Yayoi
- Georges MATHIEU
- Manolo VALDÉS

Fernando BOTERO

1932 - 2023



Circus People

2008

Oil on canvas
Signed and dated 'Botero 08' on the lower right

132 x 109 cm | 52 x 42.9 in

PROVENANCE

Artist's studio
Galerie Gmurzynska, Zug, Switzerland
Private collection

CERTIFICATE

The artist has confirmed the authenticity of this work



Fernando Botero,
Circus People, 2008

Fernando BOTERO

1932 - 2023



Gato

1981

Bronze with brown patina

Edition of 6

Signed and numbered 'Botero 5/6' on the foot

34,3 x 108,6 x 31,8 cm | 13.5 x 42.7 x 12.5 in

PROVENANCE

Artist's studio

Christie's, New York, 22 May 1986, lot 101

Private collection

LITERATURE

Edward J. Sullivan, Botero. Sculpture, Abbeville Press, New York, 1986,
ill. p. 130 (other edition)

CERTIFICATE

The artist has confirmed the authenticity of this work

Fernando BOTERO

1932 - 2023



Donna sdraiata con testa dritta / Small Woman on a Bed

Bronze
Edition of 2
Signed and numbered, foundry stamp on the right side of the base

24,5 x 52 x 30,5 cm | 9.6 x 20.5 x 12 in

PROVENANCE
Artist's studio
Private collection

CERTIFICATE
Certificate issued by the artist

André BRASILIER
b. 1929



Halte des cavaliers à Loupeigne
2015

Oil on canvas
Signed on the lower right

162 x 97 cm | 63.8 x 38.2 in

CERTIFICATE
Certificate issued by the artist

André BRASILIER
b. 1929



L'entraînement
2018

Oil on canvas
Signed on the lower right

130 x 162 cm | 51.2 x 63.8 in

André BRASILIER

b. 1929



Sous-bois en automne

2018

Oil on canvas

Signed on the lower right

46 x 55 cm | 18.1 x 21.7 in

André BRASILIER

b. 1929



Autour du parc

2018

Oil on canvas

Signed on the lower right

38 x 61 cm | 15 x 24 in

André BRASILIER
b. 1929



Le grand ciel noir
2018

Oil on canvas
Signed on the lower right

114 x 146 cm | 44.9 x 57.5 in

André Brasilier, *Le grand ciel noir*, 2018



Marc CHAGALL

1887 - 1985



Couple au village

1978

Oil on canvas

Stamped 'Marc Chagall' on the lower center; signed and dated 'Chagall 1978' on the reverse

46 x 38 cm | 18.1 x 15 in

PROVENANCE

Estate of the artist
Private collection, Switzerland
Private collection, Europe
Private collection

EXHIBITED

Paris, Opera Gallery, "Chagall : les années méditerranéennes", September 2019

CERTIFICATE

Certificate issued by the Comité Chagall

CHU Teh-Chun
1920 - 2014



Gel
1985

Oil on canvas

Signed on the lower right; signed, dated, titled and dedicated to Henriette and Albert Féraud on the reverse

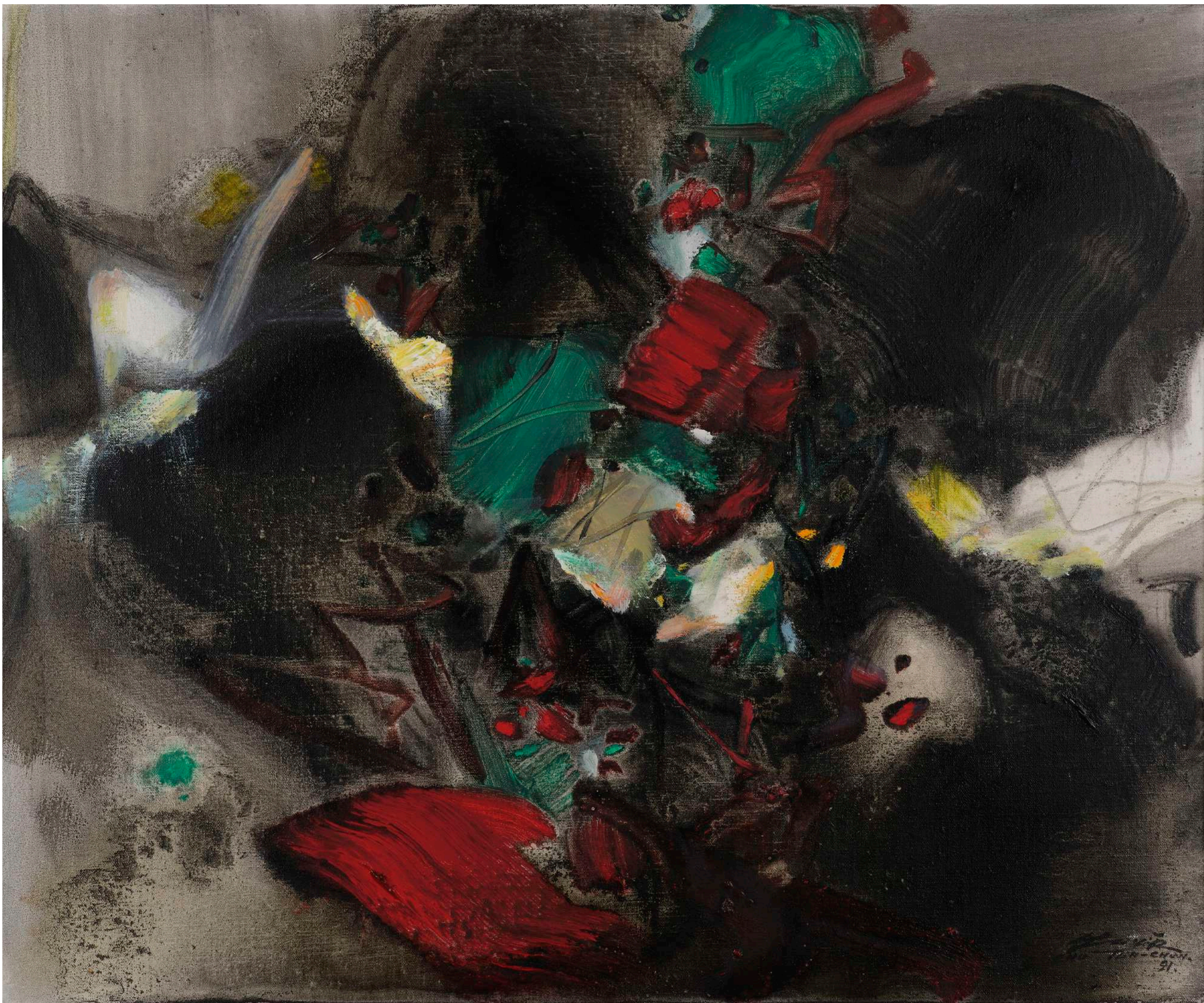
46 x 54,7 cm | 18.1 x 21.5 in

PROVENANCE

Private collection, Paris

CHU Teh-Chun

1920 - 2014



Incantations

1991

Oil on canvas

Signed and dated on the lower right; signed again, dated and titled on the reverse

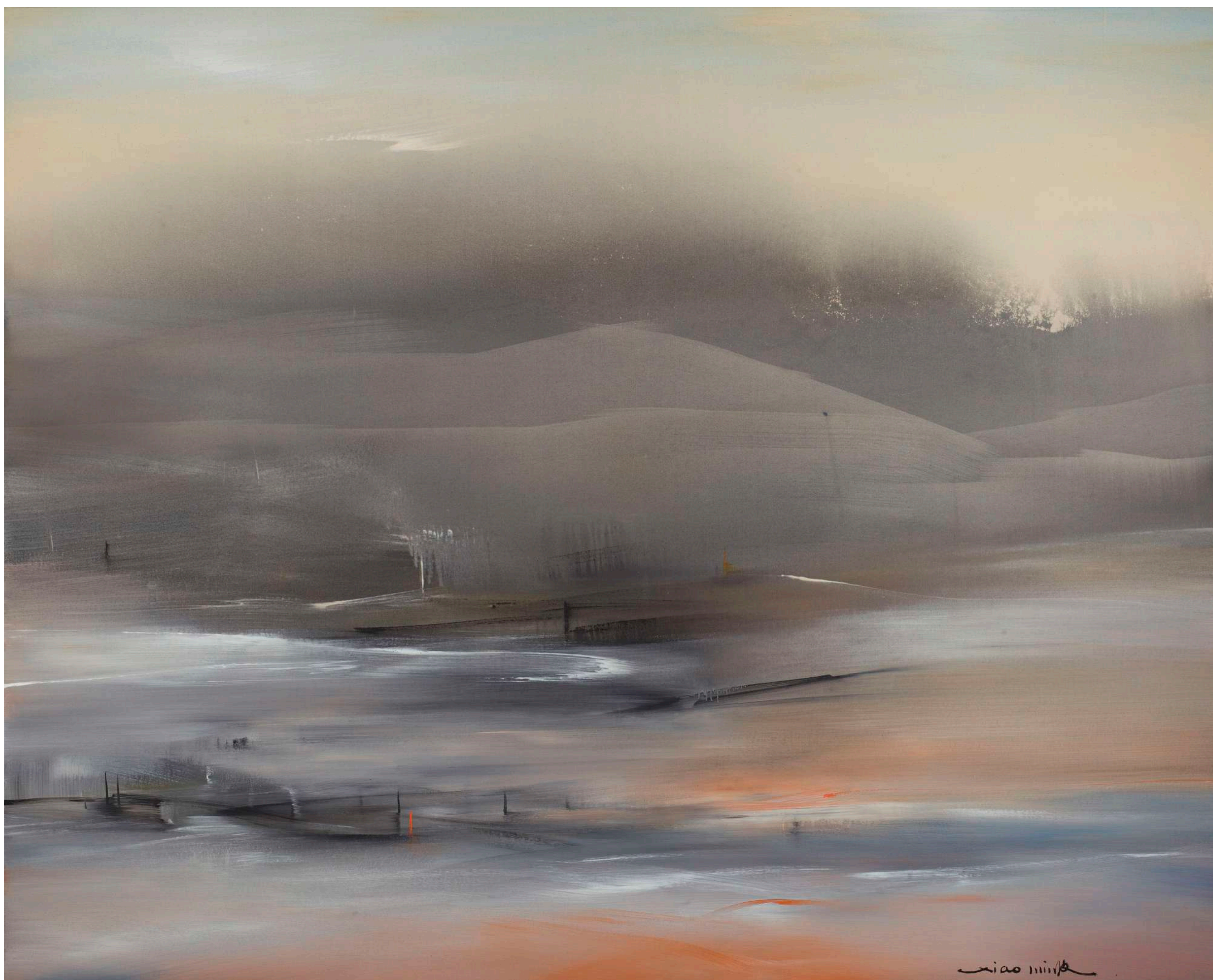
54 x 65 cm | 21.3 x 25.6 in

PROVENANCE

Private collection, Paris

FENG Xiao-Min

b. 1959



Composition n°8.1.20

2020

Acrylic on canvas

Signed on the lower right

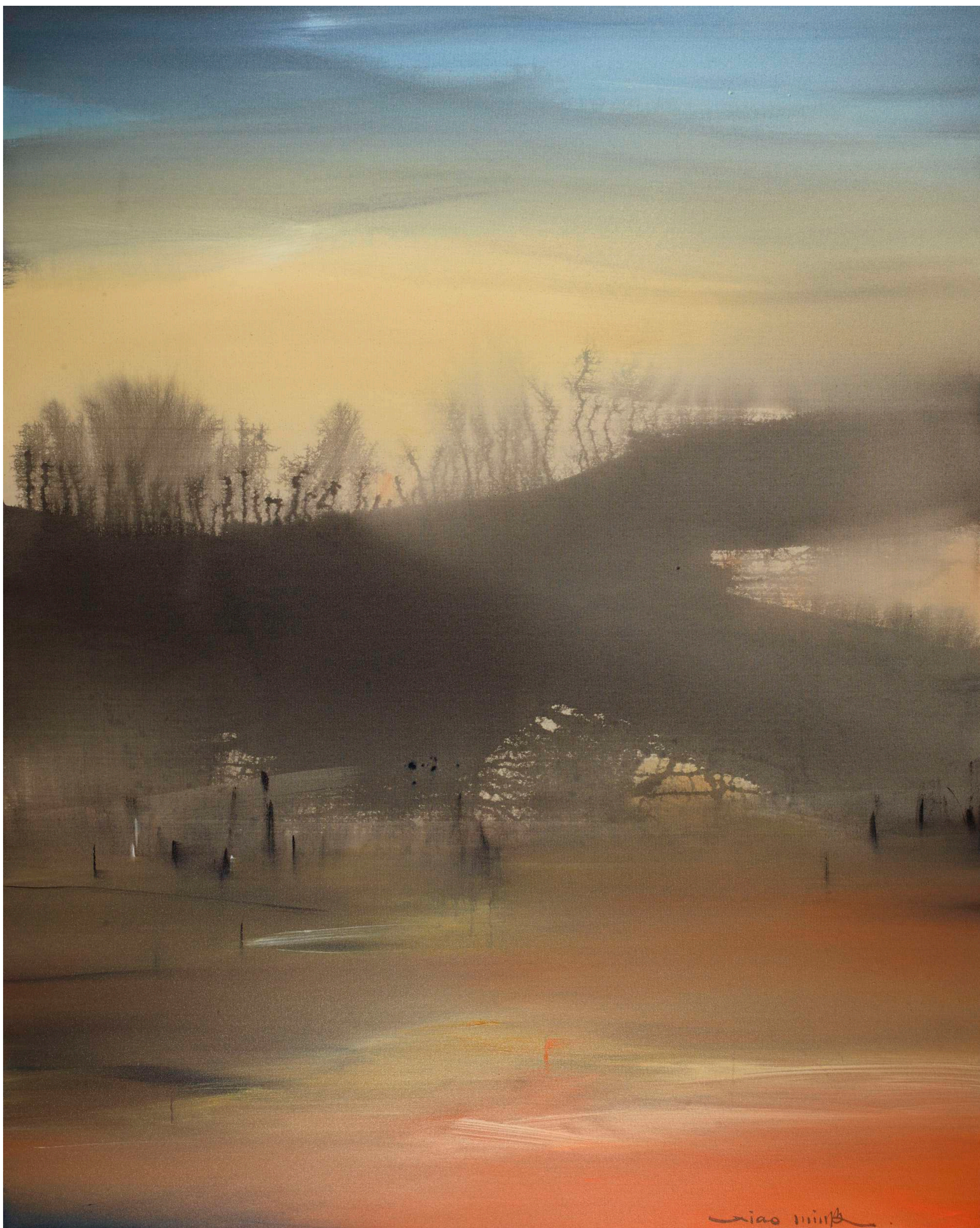
130 x 162 cm | 51.2 x 63.8 in

PROVENANCE

Artist's studio

FENG Xiao-Min

b. 1959



Composition n°18.1.20

2020

Acrylic on canvas

Signed on the lower right

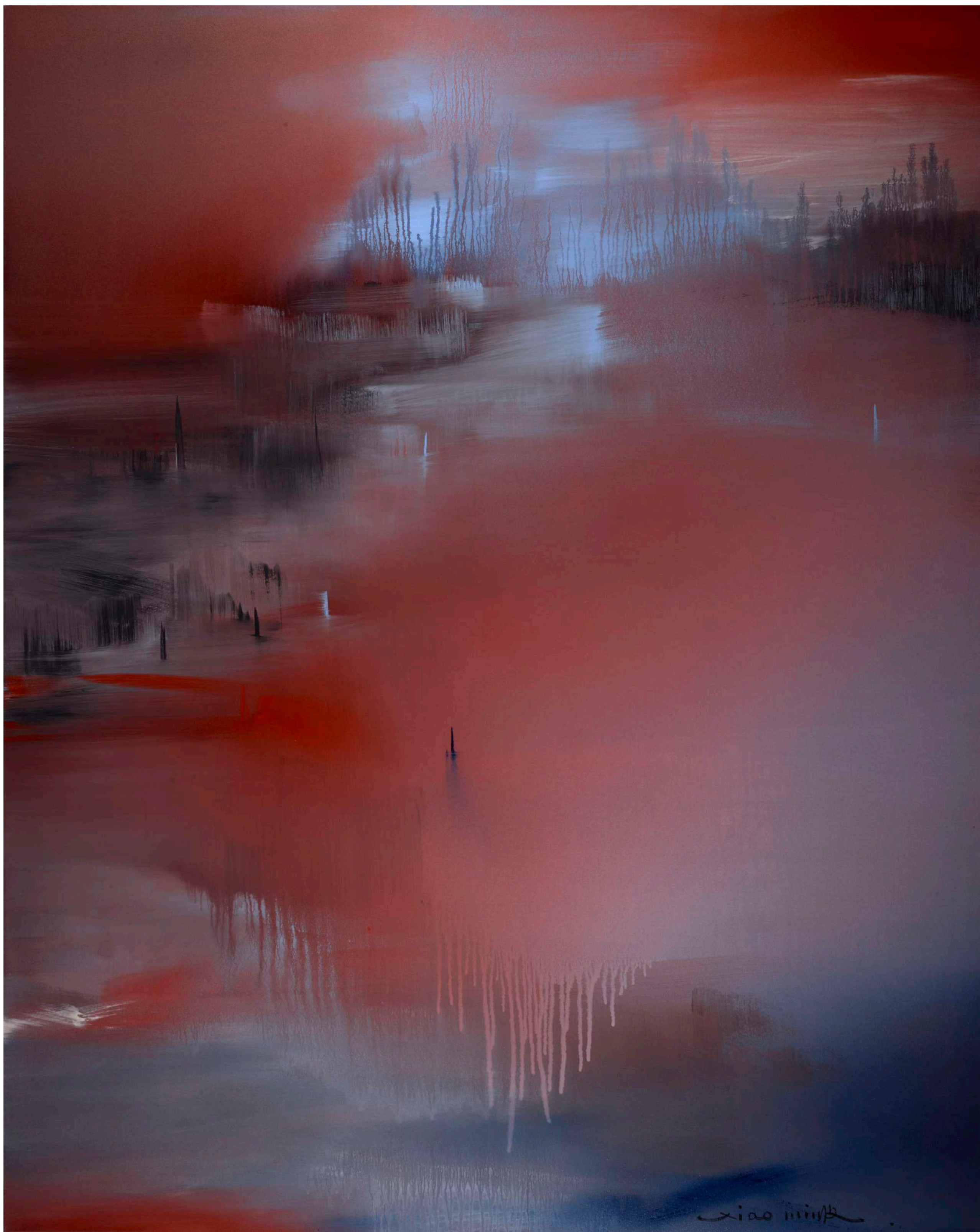
162 x 130 cm | 63.8 x 51.2 in

PROVENANCE

Artist's studio

FENG Xiao-Min

b. 1959



Composition n° 6.6.22

2022

Acrylic on canvas
Signed on the lower right

162 x 130 cm | 63.8 x 51.2 in

PROVENANCE
Artist's studio

FENG Xiao-Min

b. 1959



Composition n°16.07.20

2020

Acrylic on canvas

Signed on the lower right

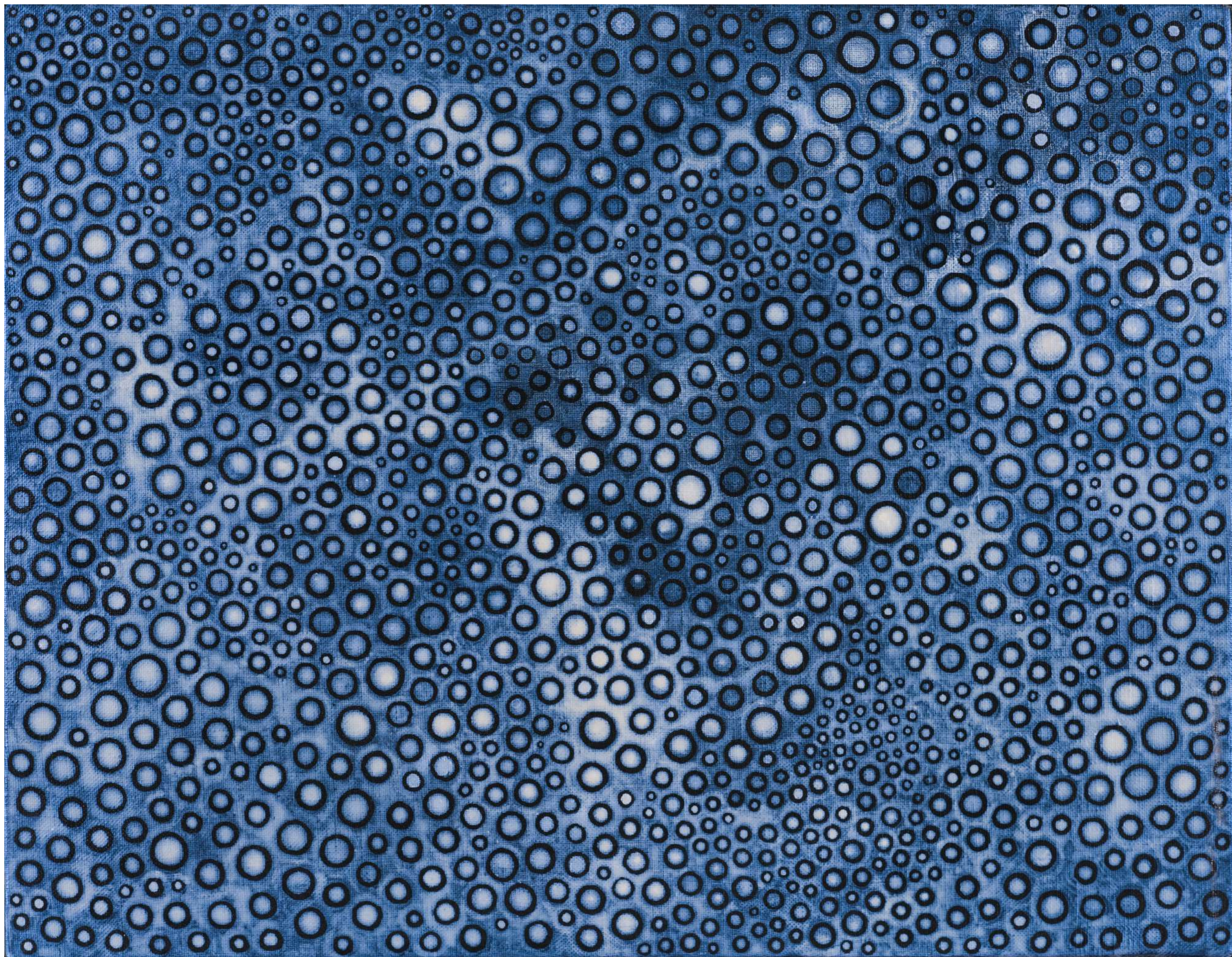
65 x 81 cm | 25.6 x 31.9 in

PROVENANCE

Artist's studio

KUSAMA Yayoi

b. 1929



Infinity Dots

2003

Acrylic on canvas

Signed in English, titled in English and Japanese and dated '2003' on the reverse

31,8 x 41 cm | 12.5 x 16.1 in

PROVENANCE

Gallery Sekiryu, Nagano, Japan

Mainichi Auction, Tokyo, 11 March 2017, lot 249

Private collection

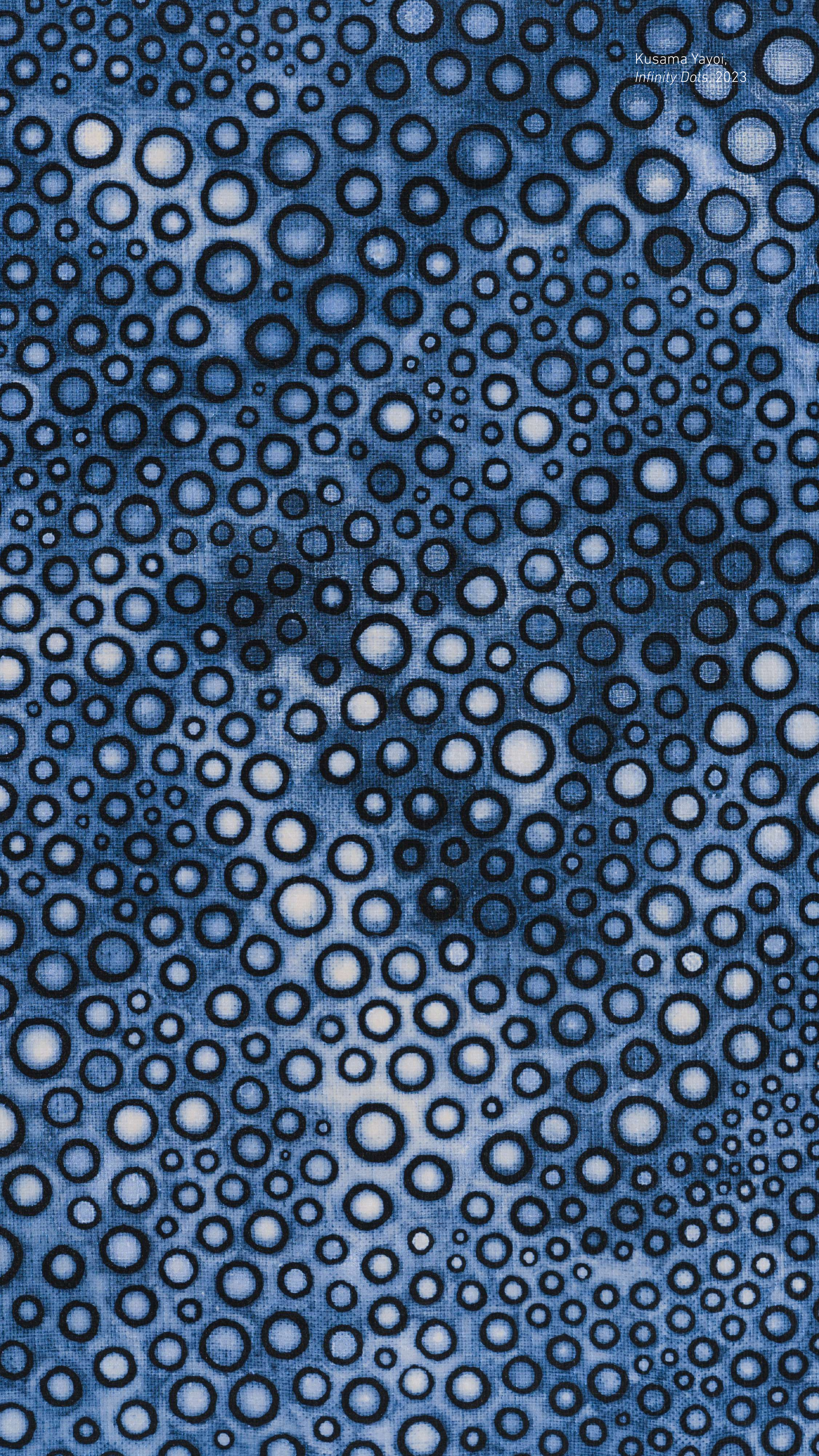
Sotheby's, Hong Kong, 8 June 2018, lot 129

Private collection

CERTIFICATE

Yayoi Kusama Inc. has confirmed the authenticity of this work

Kusama Yayoi,
Infinity Dots, 2023



Georges MATHIEU

1921 - 2012



Varennnes

1964

Oil on canvas

Signed and dated 'Mathieu 64' on the lower right

60 x 100 cm | 23.6 x 39.4 in

PROVENANCE

Estate of the artist

Galerie Perrotin

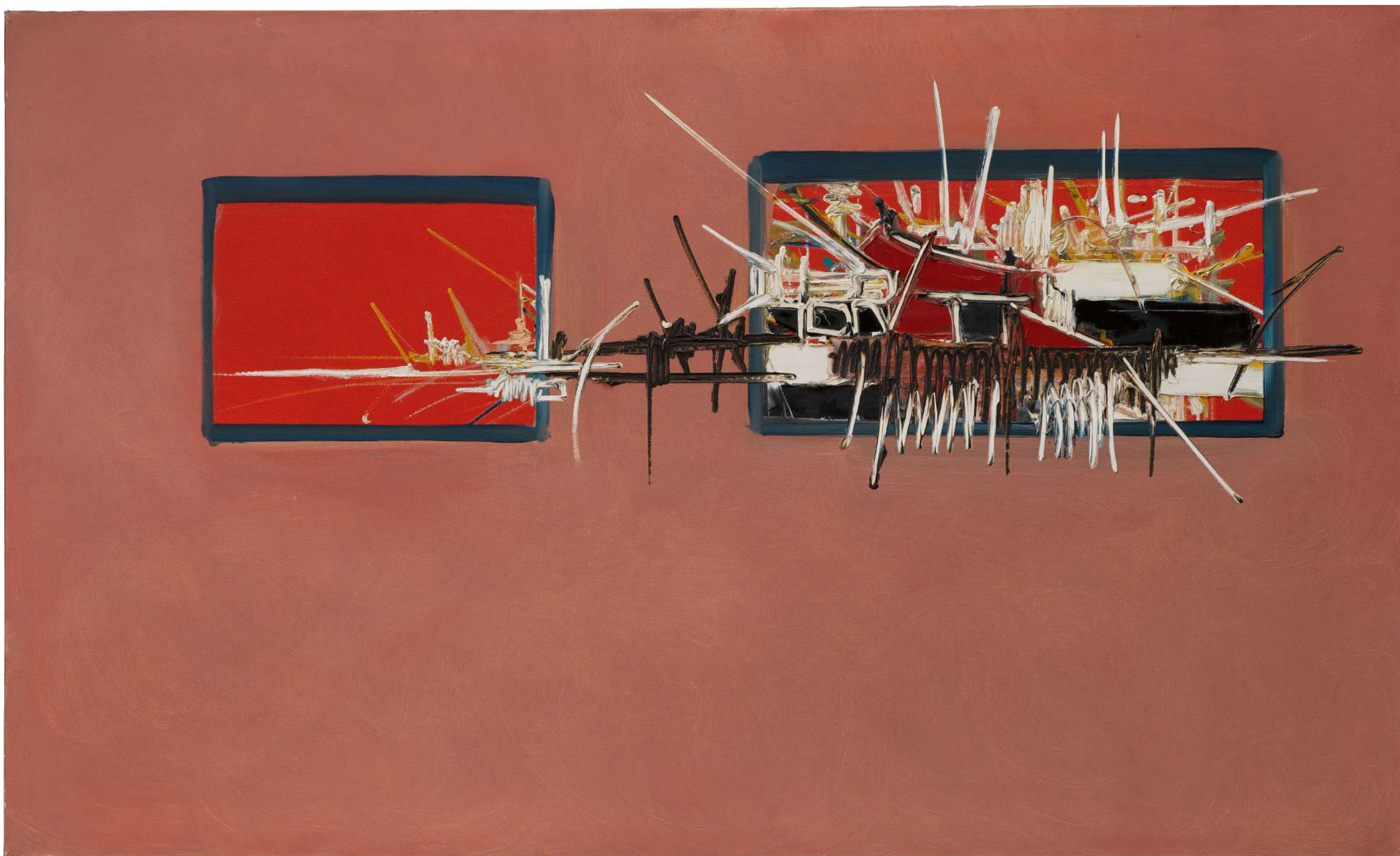
Private collection

EXHIBITED

Cologne, Kölnischer Kunstverein, "Georges Mathieu, Gemälde, Gouachen, Aquarelle, Collagen", exh. cat. no. 3, 11 July - 3 September 1967

Georges MATHIEU

1921 - 2012



Potentille

1964

Oil on canvas

89 x 146 cm | 35 x 57.5 in

PROVENANCE

Gimpel Fils Gallery, London, United Kingdom

Galerie de Seine, Paris, France

Galerie Jean Krugier, Geneva, Switzerland

Private Collection

Christie's, London, 30 November 1989, Lot 762

Private Collection

Christie's, London, 25 March 1993, Lot 20

Private collection

LITERATURE

Georges Mathieu, *Mathieu*, Milan 1969, p. 46, no. 198, illustrated in colour

Georges Mathieu, *Mathieu: 50 Ans de Creation*, Paris 2003, p. 138, illustrated

François Mathey, *Mathieu*, Paris, Hachette-Fabbri, 1969, p. 189, n° 198

EXHIBITED

Zurich, Gimpel & Hanover Galerie, "Georges Mathieu", 1965

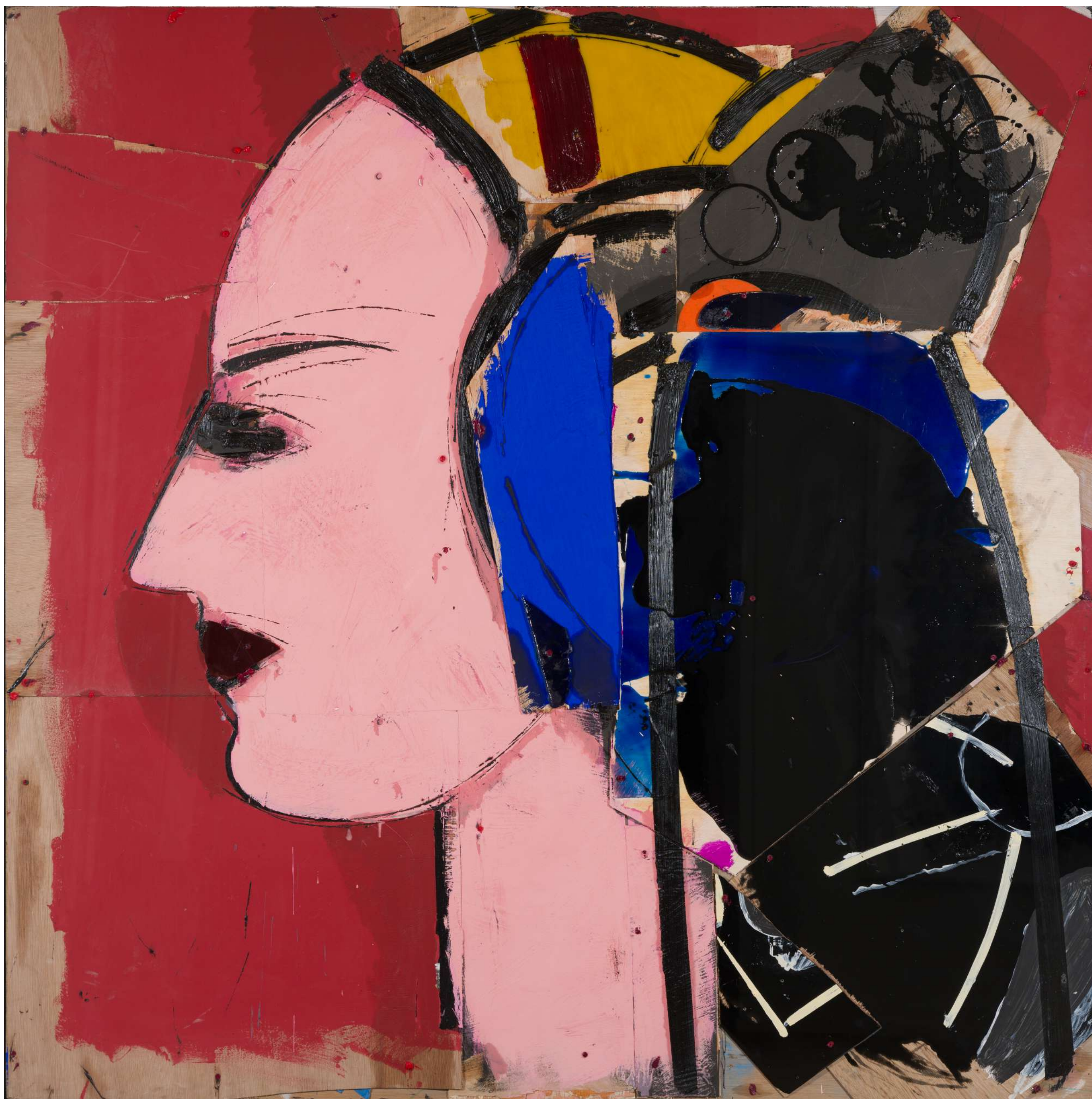
London, Gimpel Fils Gallery; Paris, Galerie Charpentier, "Georges Mathieu", 1965

CERTIFICATE

Certificate issued by the Georges Mathieu comité

Manolo VALDÉS

b. 1942



Perfil XIII

2022

Mixed media

Signed, titled and dated on the reverse

157,5 x 157,5 cm | 62 x 62 in

PROVENANCE

Artist's studio

Manolo VALDÉS

b. 1942



Double Butterfly

2017

Bronze with gold platina
Edition of 8

69 x 56 X 30 cm | 27.2 X 22 x 11.8 in

Manolo VALDÉS

b. 1942



Asteria

2020

Aluminium

Signed and numbered 'MV 3/8' on the lower back

Edition of 8

76,2 x 61 x 48,3 cm | 30 x 24 x 19 in

PROVENANCE

Artist's studio

Manolo Valdés,
Asteria, 2020



Manolo VALDÉS

b. 1942



Ivy II

2017

Alabaster and aluminium
Stamped 'M.V.' on the back of the base

96 x 83 x 119 cm | 37.8 x 32.7 x 46.9 in

PROVENANCE

Artist's studio

Opera Gallery, New York, USA

Private collection

Manolo VALDÉS

b. 1942



Glass Butterflies I

2022

Glass and polychromated steel
Signed on the base

124,5 x 48,3 x 45,7 cm | 49 x 19 x 18 in

PROVENANCE
Artist's studio

Opera Gallery x ART021 Shanghai Contemporary Art Fair

From November 9-12, 2023

BOOTH

Booth number E1-39

VENUE

Shanghai Exhibition Center
1000 Yan'an Middle Road,
Jing'an District, 200040,
Shanghai, China

OPENING HOURS

Collectors Preview | November 9 | 13:00 - 20:00
Collectors Preview | November 10 | 13:00 - 20:00
Public Day | November 11 | 11:00 - 18:00
Public Day | November 12 | 11:00 - 18:00